



GAT MONTHLY MEMBERSHIP PROGRESS REPORT

Results as of: 2/28/2023

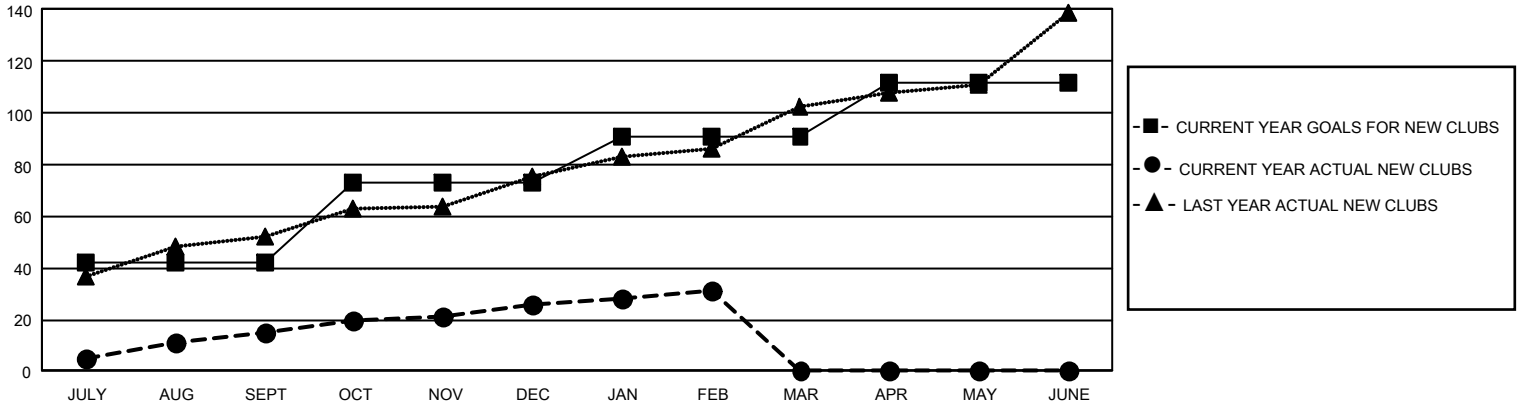
GMT Constitutional Area 6, Group H

REPORT DOES NOT INCLUDE CLUBS IN UNDISTRICTED AREAS.

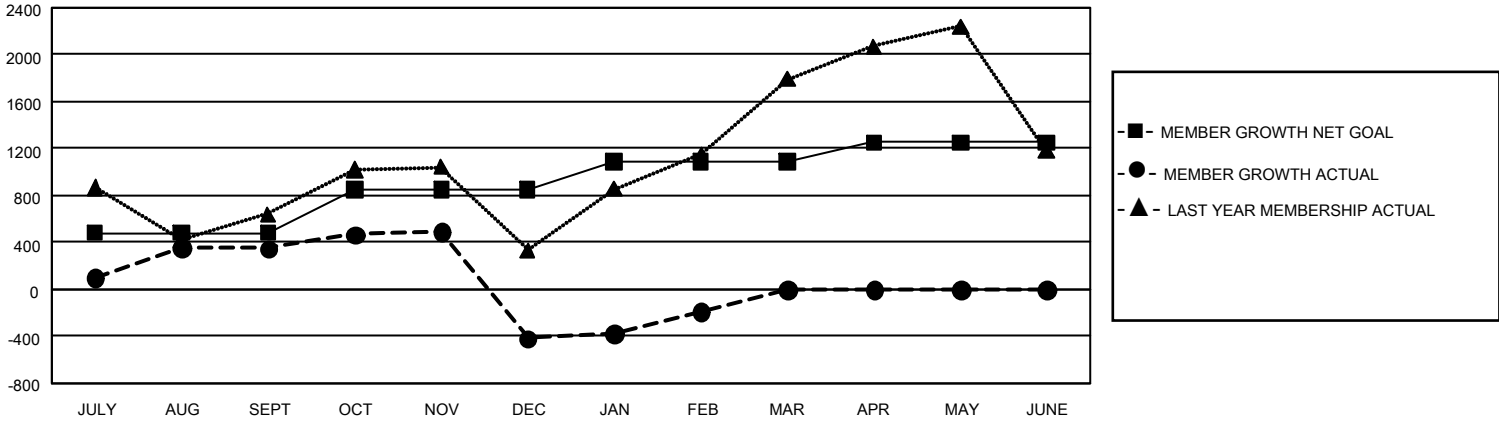
Clubs			
RESULTS FOR 2022-2023			
QUARTER	NEW CLUB GOAL	NEW CLUBS	DROPPED CLUBS
JULY/AUG/SEPT	126	15	8
OCT/NOV/DEC	93	11	36
JAN/FEB/MAR	54	5	12
APR/MAY/JUNE	63	0	0

Members			
RESULTS FOR 2022-2023			
QUARTER	MEMBER GROWTH NET GOAL	MEMBER GROWTH ACTUAL	DROPPED MEMBERS ACTUAL (including transfers)
JULY/AUG/SEPT	480	1,337	845
OCT/NOV/DEC	370	938	1,647
JAN/FEB/MAR	235	865	461
APR/MAY/JUNE	165	0	0

GOALS AND ACTUAL NEW CLUBS CUMULATIVE



GOALS AND ACTUAL MEMBERS CUMULATIVE



DROPPED CLUBS: 56	461 CLUBS OF 1,161 ADDED 1 OR MORE NEW MEMBERS	<u>GENDER DISTRIBUTION</u>	
		MALE 21,991 (67.66%) FEMALE 10,497 (32.30%) NON BINARY 0 (0.00%) PREFER NOT TO ANSWER 13 (0.04%)	
<u>DROPPED MEMBERS</u>		CLICK HERE FOR CUMULATIVE MEMBERSHIP DATA	TOTAL FAMILY UNIT MEMBERS 20,039
DECEASED 56 CLUB CANCELLED 761 OTHER 2,136 TOTAL 2,953			FAMILY MEMBERS PAYING HALF DUES 12,356